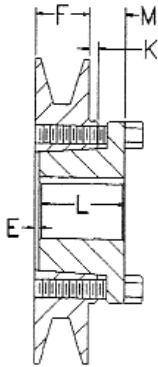


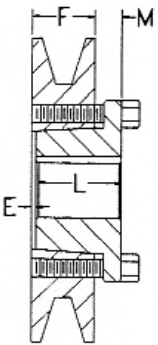
maurey HQ Ful-Grip Sheaves-Single Groove



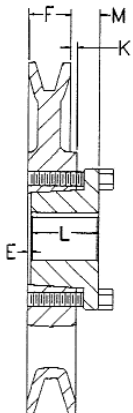
STYLE 1



STYLE 2



STYLE 4



For Both Belt Sections "A" (4L) and "O" (3L)

O.D. Inches	D.D. A Belts Inches	D.D. O Belts Inches	Part Number	Alternate Part Number	List** Price	Style	Weight (Lbs)	Dimensions - Inches				
								E	F	K	L	M
3.05	2.8	2.5	---	AK30H	\$ 25.08	1	1.1	3/8	3/4	7/16	1-1/4	7/8
3.25	3.0	2.7	---	AK32H	\$ 25.47	1	1.2	3/8	3/4	7/16	1-1/4	7/8
3.45	3.2	2.9	---	AK34H	\$ 25.84	2	1.0	1/16	3/4	1/8	1-1/4	9/16
3.75	3.5	3.2	---	AK39H	\$ 27.34	2	1.4	1/16	3/4	1/8	1-1/4	9/16
3.95	3.7	3.4	AH40	AK41H	\$ 27.86	1	1.2	1/16	3/4	1/8	1-1/4	9/16
4.25	4.0	3.7	AH43	AK44H	\$ 30.44	1	2.0	1/16	3/4	1/8	1-1/4	9/16
4.45	4.2	3.9	AH45	AK46H	\$ 33.68	1	2.1	1/16	3/4	1/8	1-1/4	9/16
4.75	4.5	4.2	AH48	AK49H	\$ 34.34	1	2.6	1/16	3/4	1/8	1-1/4	9/16
4.95	4.7	4.4	AH50	AK51H	\$ 34.98	1	2.8	1/16	3/4	1/8	1-1/4	9/16
5.25	5.0	4.7	AH53	AK54H	\$ 35.62	1	3.4	1/16	3/4	1/8	1-1/4	9/16
5.45	5.2	4.9	AH55	AK56H	\$ 29.84	4	2.0	1/16	3/4	1/8	1-1/4	9/16
5.95	5.7	5.4	AH60	AK61H	\$ 31.08	4	2.7	1/16	3/4	1/8	1-1/4	9/16
6.25	6.0	5.7	AH63	AK64H	\$ 31.58	4	2.7	1/16	3/4	1/8	1-1/4	9/16
6.45	6.2	5.9	AH65	AK66H	\$ 32.88	4	2.9	1/16	3/4	1/8	1-1/4	9/16
6.75	6.5	6.2	AH68	AK69H	\$ 37.00	4	2.9	1/16	3/4	1/8	1-1/4	9/16
6.95	6.7	6.6	AH70	AK71H	\$ 37.92	4	2.5	1/16	3/4	1/8	1-1/4	9/16
7.25	7.0	6.7	AH73	AK74H	\$ 39.80	4	2.8	1/16	3/4	1/8	1-1/4	9/16
7.75	7.5	7.2	AH78	AK79H	\$ 43.53	4	3.2	1/16	3/4	1/8	1-1/4	9/16
7.95	7.7	7.4	AH80	---	\$ 44.40	4	2.9	1/16	3/4	1/8	1-1/4	9/16
8.25	8.0	7.7	AH83	AK84H	\$ 46.16	4	3.4	1/16	3/4	1/8	1-1/4	9/16
8.75	8.5	8.2	AH88	AK89H	\$ 46.30	4	3.9	1/16	3/4	1/8	1-1/4	9/16
8.95	8.7	8.4	AH90	---	\$ 51.24	4	2.8	1/16	3/4	1/8	1-1/4	9/16
9.25	9.0	8.7	AH93	AK94H	\$ 53.64	4	3.3	1/16	3/4	1/8	1-1/4	9/16
9.95	9.7	9.4	AH100	---	\$ 57.88	4	4.0	1/16	3/4	1/8	1-1/4	9/16
10.25	10.0	9.7	AH103	AK104H	\$ 58.50	4	4.3	1/16	3/4	1/8	1-1/4	9/16
10.95	10.7	10.4	AH110	---	\$ 61.56	4	3.9	1/16	3/4	1/8	1-1/4	9/16
11.25	11.0	10.7	AH113	AK114H	\$ 62.68	4	5.8	1/16	3/4	1/8	1-1/4	9/16
11.95	11.7	11.4	AH120	---	\$ 66.80	4	5.9	1/16	3/4	1/8	1-1/4	9/16
12.25	12.0	11.7	AH123	AK124H	\$ 68.48	4	6.3	1/16	3/4	1/8	1-1/4	9/16
12.95	12.7	12.4	AH130	---	\$ 75.84	4	7.2	1/16	7/8	0	1-1/4	7/16
13.25	13.0	12.7	AH133	AK134H	\$ 79.04	4	6.7	1/16	7/8	0	1-1/4	7/16
13.95	13.7	13.4	AH140	---	\$ 85.80	4	7.6	1/16	7/8	0	1-1/4	7/16
14.25	14.0	13.7	AH143	AK144H	\$ 88.80	4	8.9	1/16	7/8	0	1-1/4	7/16
14.95	14.7	14.4	AH150	---	\$ 94.92	4	9.5	1/16	7/8	0	1-1/4	7/16
15.25	15.0	14.7	AH153	AK154H	\$ 97.52	4	10.1	1/16	7/8	0	1-1/4	7/16
18.25	18.0	17.7	AH183	AK184H	\$ 115.28	4	12.2	1/16	7/8	0	1-1/4	7/16

For Both Belt Sections "B" (5L) and "A" (4L)

O.D. Inches	D.D. B Belts Inches	D.D. A Belts Inches	Part Number	Alternate Part Number	List** Price	Style	Weight (Lbs)	Dimensions - Inches				
								E	F	K	L	M
3.15	2.8	2.4	BH32	BK30H	\$ 28.53	1	0.6	15/16	7/8	7/8	1-1/4	1-5/16
3.35	3.0	2.6	BH34	BK32H	\$ 30.34	1	0.8	15/16	7/8	7/8	1-1/4	1-5/16
3.55	3.2	2.8	BH36	BK34H	\$ 30.39	1	1.0	15/16	7/8	7/16	1-1/4	1-5/16
3.75	3.4	3.0	BH38	BK36H	\$ 30.63	2	1.4	1/16	7/8	0	1-1/4	7/16
3.95	3.6	3.2	BH40	BK40H	\$ 30.78	2	1.7	1/16	7/8	0	1-1/4	7/16
4.15	3.8	3.4	BH42	---	\$ 32.38	2	2.0	1/16	7/8	0	1-1/4	7/16
4.25	3.9	3.5	---	BK45H	\$ 32.38	2	1.8	1/16	7/8	0	1-1/4	7/16
4.35	4.0	3.6	BH44	---	\$ 33.68	2	2.5	1/16	7/8	0	1-1/4	7/16
4.45	4.1	3.7	---	BK47H	\$ 33.68	2	2.2	1/16	7/8	0	1-1/4	7/16
4.55	4.2	3.8	BH46	---	\$ 36.38	2	2.7	1/16	7/8	0	1-1/4	7/16
4.75	4.4	4.0	BH48	BK50H	\$ 38.86	2	2.9	1/16	7/8	0	1-1/4	7/16
4.95	4.6	4.2	BH50	BK52H	\$ 39.20	2	3.1	1/16	7/8	0	1-1/4	7/16
5.15	4.8	4.4	BH52	---	\$ 40.32	2	3.7	1/16	7/8	0	1-1/4	7/16
5.25	4.9	4.5	BH53	BK55H	\$ 41.46	2	3.9	1/16	7/8	0	1-1/4	7/16
5.35	5.0	4.6	BH54	---	\$ 41.78	4	1.9	1/16	7/8	0	1-1/4	7/16
5.55	5.2	4.8	BH56	---	\$ 42.60	4	2.4	1/16	7/8	0	1-1/4	7/16
5.75	5.4	5.0	BH58	BK60H	\$ 35.08	4	2.6	1/16	7/8	0	1-1/4	7/16
5.95	5.6	5.2	BH60	---	\$ 36.96	4	2.8	1/16	7/8	0	1-1/4	7/16
6.15	5.8	5.4	BH62	---	\$ 38.56	4	2.8	1/16	7/8	0	1-1/4	7/16
6.25	5.9	5.5	---	BK65H	\$ 38.56	2	2.8	1/16	7/8	0	1-1/4	7/16
6.35	6.0	5.6	BH64	---	\$ 40.00	4	2.8	1/16	7/8	0	1-1/4	7/16
6.55	6.2	5.8	BH66	---	\$ 41.08	4	3.2	1/16	7/8	0	1-1/4	7/16
6.75	6.4	6.0	BH68	BK70H	\$ 42.00	4	3.2	1/16	7/8	0	1-1/4	7/16
6.95	6.6	6.2	BH70	BK72H	\$ 43.92	4	3.9	1/16	7/8	0	1-1/4	7/16
7.15	6.8	6.4	BH72	---	\$ 45.16	4	3.9	1/16	7/8	0	1-1/4	7/16
7.25	6.9	6.5	---	BK75H	\$ 45.16	4	3.3	1/8	7/8	0	1-1/4	1/2
7.75	7.4	7.0	BH78	BK80H	\$ 47.16	4	3.2	1/16	7/8	0	1-1/4	7/16
8.25	7.9	7.5	BH83	BK85H	\$ 52.32	4	3.4	1/16	7/8	0	1-1/4	7/16
8.75	8.4	8.0	BH88	BK90H	\$ 56.97	4	4.4	1/16	7/8	0	1-1/4	7/16
8.95	8.6	8.2	BH90	---	\$ 57.36	4	3.9	1/16	7/8	0	1-1/4	7/16
9.25	8.9	8.5	---	BK95H	\$ 60.11	4	5.0	1/8	7/8	0	1-1/4	1/2
9.75	9.4	9.0	BH98	BK100H	\$ 62.16	4	4.7	1/16	7/8	0	1-1/4	7/16
10.75	10.4	10.0	BH108	BK110H	\$ 68.36	4	6.3	1/16	7/8	0	1-1/4	7/16
11.35	11.0	10.6	BH114	---	\$ 71.52	4	5.1	1/16	7/8	0	1-1/4	7/16
11.75	11.4	11.0	BH118	BK120H	\$ 75.60	4	6.8	1/16	7/8	0	1-1/4	7/16
12.75	12.4	12.0	BH128	BK130H	\$ 82.76	4	6.9	1/16	7/8	0	1-1/4	7/16
13.95	13.6	13.2	BH140	---	\$ 95.44	4	6.1	1/16	7/8	0	1-1/4	7/16
15.75	15.4	15.0	BH158	BK160H	\$ 109.64	4	11.7	3/16	1.0	0	1-1/4	7/16
18.75	18.4	18.0	BH188	BK190H	\$ 149.96	4	13.8	3/16	1.0	0	1-1/4	7/16

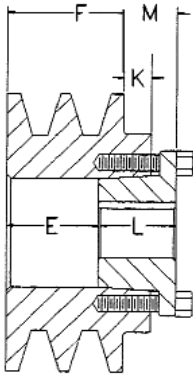
** List Prices Shown are For Sheave Only. Refer to Page A-9 for Bushing List Price.



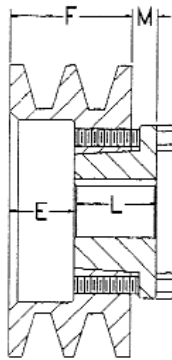
For Both Belt Sections "A" (4L) and "O" (3L)

O.D. Inches	D.D. A Belts Inches	D.D. O Belts Inches	Part Number	Alternate Part Number	List Price	Style	Weight (Lbs)	Dimensions - Inches				
								E	F	K	L	M
3.05	2.8	2.5	DH2300	2AK30H	\$ 42.00	1	1.9	1	1-3/8	7/16	1-1/4	7/8
3.25	3.0	2.7	DH2325	2AK32H	\$ 49.16	1	2.3	1	1-3/8	7/16	1-1/4	7/8
3.45	3.2	2.9	DH2350	2AK34H	\$ 49.48	2	1.8	9/16	1-3/8	0	1-1/4	7/16
3.75	3.5	3.2	DH2380	2AK39H	\$ 50.52	2	2.3	9/16	1-3/8	0	1-1/4	7/16
3.95	3.7	3.4	DH2400	2AK41H	\$ 55.88	3	2.0	1/16	1-3/8	1/2	1-1/4	1/16
4.25	4.0	3.7	DH2425	2AK44H	\$ 57.88	3	2.9	1/16	1-3/8	1/2	1-1/4	1/16
4.45	4.2	3.9	DH2450	2AK46H	\$ 60.60	3	3.2	1/16	1-3/8	1/2	1-1/4	1/16
4.75	4.5	4.2	DH2480	2AK49H	\$ 61.76	3	3.5	1/16	1-3/8	1/2	1-1/4	1/16
4.95	4.7	4.4	DH2500	2AK51H	\$ 63.44	3	3.1	1/16	1-3/8	1/2	1-1/4	1/16
5.25	5.0	4.7	DH2525	2AK54H	\$ 66.16	3	4.6	1/16	1-3/8	1/2	1-1/4	1/16
5.45	5.2	4.9	DH2550	2AK56H	\$ 67.12	3	4.0	1/16	1-3/8	1/2	1-1/4	1/16
5.75	5.5	5.2	DH2580	2AK59H	\$ 67.80	3	4.9	1/16	1-3/8	1/2	1-1/4	1/16
5.95	5.7	5.4	DH2600	2AK61H	\$ 69.32	4	3.7	1/16	1-3/8	1/2	1-1/4	1/16
6.25	6.0	5.7	---	2AK64H	\$ 74.76	4	3.9	1/16	1-3/8	1/2	1-1/4	1/16
6.45	6.2	5.9	DH2650	---	\$ 74.76	4	4.9	1/16	1-3/8	1/2	1-1/4	1/16
6.95	6.7	6.4	DH2700	---	\$ 79.08	4	5.4	1/16	1-3/8	1/2	1-1/4	1/16
7.25	7.0	6.7	DH2730	2AK74H	\$ 81.68	4	4.4	1/16	1-3/8	1/2	1-1/4	1/16
7.95	7.7	7.4	DH2800	---	\$ 87.88	4	5.9	1/16	1-3/8	1/2	1-1/4	1/16
8.95	8.7	8.4	DH2900	---	\$ 95.44	4	7.2	1/16	1-3/8	1/2	1-1/4	1/16
9.25	9.0	8.7	DH2930	2AK94H	\$ 97.60	4	7.2	1/16	1-3/8	1/2	1-1/4	1/16
9.95	9.7	9.4	DH3100	---	\$100.72	4	8.6	1/16	1-3/8	1/2	1-1/4	1/16
10.25	10.0	9.7	DH3103	2AK104H	\$102.08	4	9.7	1/16	1-3/8	1/2	1-1/4	1/16
10.95	10.7	10.4	DH3110	---	\$110.04	4	10.2	1/16	1-3/8	1/2	1-1/4	1/16
11.95	11.7	11.4	DH3120	---	\$117.80	4	10.7	1/16	1-3/8	1/2	1-1/4	1/16
12.25	12.0	11.7	DH3123	2AK124H	\$118.42	4	10.9	1/16	1-3/8	1/2	1-1/4	1/16
14.25	14.0	13.7	DH3143	2AK144H	\$134.08	4	14.4	1/16	1-3/8	1/2	1-1/4	1/16
15.25	15.0	14.7	DH3153	2AK154H	\$150.24	4	13.6	1/16	1-3/8	1/2	1-1/4	1/16
18.25	18.0	17.7	DH3183	2AK184H	\$197.92	4	20.1	1/4	1-3/8	5/16	1-1/4	1/8

STYLE 1



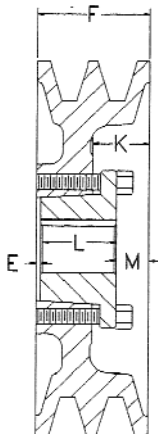
STYLE 2



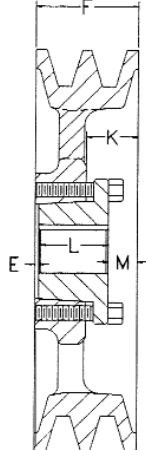
For Both Belt Sections "B" (5L) and "A" (4L)

O.D. Inches	D.D. A Belts Inches	D.D. O Belts Inches	Part Number	Alternate Part Number	List Price	Style	Weight (Lbs)	Dimensions - Inches				
								E	F	K	L	M
3.35	3.0	2.6	DH4340	2BK32H	\$ 51.88	1	2.5	1-3/8	1-3/4	7/16	1-1/4	7/8
3.55	3.2	2.8	DH4360	2BK34H	\$ 52.20	1	2.9	1-3/8	1-3/4	7/16	1-1/4	7/8
3.75	3.4	3.0	DH4380	2BK36H	\$ 53.24	2	2.6	15/16	1-3/4	0	1-1/4	7/16
3.95	3.6	3.2	DH4400	2BK40H	\$ 53.76	2	2.9	15/16	1-3/4	0	1-1/4	7/16
4.15	3.8	3.4	DH4420	---	\$ 54.72	2	3.5	15/16	1-3/4	0	1-1/4	7/16
4.35	4.0	3.6	DH4440	---	\$ 57.96	3	3.1	1/16	1-3/4	7/8	1-1/4	7/16
4.45	4.1	3.7	---	2BK47H	\$ 57.96	3	2.8	1/16	1-3/4	7/8	1-1/4	7/16
4.55	4.2	3.8	DH4460	---	\$ 61.12	3	3.8	1/16	1-3/4	7/8	1-1/4	7/16
4.75	4.4	4.0	DH4480	2BK50H	\$ 61.84	3	3.9	1/16	1-3/4	7/8	1-1/4	7/16
4.95	4.6	4.2	DH4500	2BK52H	\$ 63.44	3	4.7	1/16	1-3/4	7/8	1-1/4	7/16
5.15	4.8	4.4	DH4520	---	\$ 66.88	3	4.8	1/16	1-3/4	7/8	1-1/4	7/16
5.35	5.0	4.6	DH4540	---	\$ 69.32	3	4.9	1/16	1-3/4	7/8	1-1/4	7/16
5.45	5.1	4.7	---	2BK57H	\$ 69.32	3	4.3	1/16	1-3/4	7/8	1-1/4	7/16
5.55	5.2	4.8	DH4560	---	\$ 70.36	4	4.0	1/16	1-3/4	7/8	1-1/4	7/16
5.75	5.4	5.0	DH4580	2BK60H	\$ 71.40	4	4.9	1/16	1-3/4	7/8	1-1/4	7/16
5.95	5.6	5.2	DH4600	2BK62H	\$ 72.36	4	4.9	1/16	1-3/4	7/8	1-1/4	7/16
6.15	5.8	5.4	DH4620	---	\$ 76.12	4	5.1	1/16	1-3/4	7/8	1-1/4	7/16
6.35	6.0	5.6	DH4640	---	\$ 78.76	4	5.9	1/16	1-3/4	7/8	1-1/4	7/16
6.45	6.1	5.7	---	2BK67H	\$ 78.76	4	5.0	5/16	1-3/4	5/8	1-1/4	7/16
6.55	6.2	5.8	DH4660	---	\$ 80.12	4	5.2	1/16	1-3/4	7/8	1-1/4	7/16
6.75	6.4	6.0	DH4680	2BK70H	\$ 81.48	4	6.1	1/16	1-3/4	7/8	1-1/4	7/16
6.95	6.6	6.2	DH4700	---	\$ 84.12	4	5.6	1/16	1-3/4	7/8	1-1/4	7/16
7.15	6.8	6.4	DH4720	---	\$ 86.72	4	6.9	1/16	1-3/4	7/8	1-1/4	7/16
7.75	7.4	7.0	DH4780	2BK80H	\$ 94.72	4	6.9	1/16	1-3/4	7/8	1-1/4	7/16
8.75	8.4	8.0	DH4880	2BK90H	\$ 96.53	4	8.8	1/16	1-3/4	7/8	1-1/4	7/16
8.95	8.6	8.2	DH4900	---	\$ 99.56	4	7.4	1/16	1-3/4	7/8	1-1/4	7/16
9.75	9.4	9.0	DH4980	2BK100H	\$111.92	4	9.7	1/16	1-3/4	7/8	1-1/4	7/16
10.75	10.4	10.0	DH5108	2BK110H	\$121.28	4	11.9	1/16	1-3/4	7/8	1-1/4	7/16
11.35	11.0	10.6	DH5114	---	\$131.56	4	12.0	1/16	1-3/4	7/8	1-1/4	7/16
11.75	11.4	11.0	DH5118	2BK120H	\$138.06	4	12.2	1/16	1-3/4	7/8	1-1/4	7/16
12.75	12.4	12.0	DH5128	2BK130H	\$148.88	4	13.2	1/16	1-3/4	7/8	1-1/4	7/16
13.95	13.6	13.2	DH5140	---	\$169.28	4	14.1	1/4	1-3/4	11/16	1-1/4	1/4
15.75	15.4	15.0	DH5158	2BK160H	\$176.72	4	19.2	1/4	1-3/4	11/16	1-1/4	1/4
18.75	18.4	18.0	DH5188	2BK190H	\$198.36	4	21.0	1/4	1-3/4	11/16	1-1/4	1/4

STYLE 3
(SOLID)



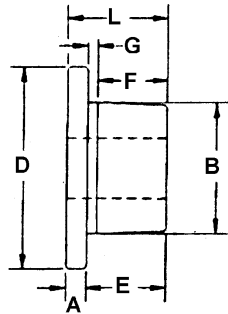
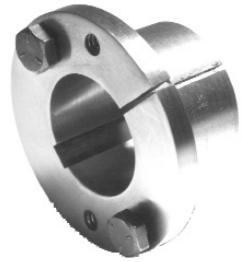
STYLE 4
(SPOKED)



** List Prices Shown are For Sheave Only. Refer to Page A-9 for Bushing List Price.



HQ Ful-grip Bushings

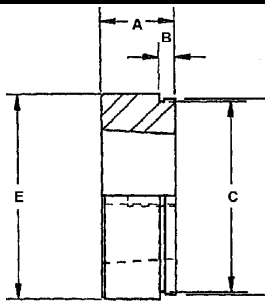


When Ordering Specify Bore Size

For Example: HQ x 3/4"

HQ BUSHING DIMENSIONS (inches)							List Price \$12.40	
A	B	D	E	F	G	L	Bolt Circle	Cap Screws
1/4	1-5/8	2-1/2	1	7/8	1/8	1-1/4	2	2-1/4 x 3/4

STOCK BORES	
BORE (inches)	KEYSEAT
3/8, 7/16, 1/2, 9/16	NONE
5/8, 11/16, 3/4, 3/16, 7/8	3/16 X 3/32
15/16, 1, 1-1/16, 1-1/8, 1-3/16	1/4 X 1/8
1-1/4	1/4 x 1/16
1-5/16, 1-3/8	5/16 X 1/16
1-7/16, 1-1/2	3/8 X 1/16
BORE (mm)	KEYSTOCK
14, 16, 17	5 x 5
18, 19, 20, 22	6 x 6
24, 25, 28, 30	8 x 7
32, 35, 38	10 x 8



weld-on hub for HQ bushing

Part Number HHQ1



HHQ1 DIMENSIONS (inches)				
A	B	C	D	E
7/8	3/16	2.311	2-3/8	2-1/2
List Price \$28.50				



steel shaft collars

steel shaft collars

Made from cold rolled steel precision machined for true Running faces. Locked in position for vibration proof Service with cup point, hollow head set screws.



ORDER IN STANDARD PACKAGE QUANTITIES

Part Number	List Price	Bore Inches	Outside Diameter Inches	Width Inches	Size of Set Screw	Weight Ounces Each	Std. Pkg. Qty	Part Number	List Price	Bore Inches	Outside Diameter Inches	Width Inches	Size of Set Screw	Weight Ounces Each	Std.* Pkg. Qty
1544	\$ 1.52	3/16	7/16	1/4	8-32 X 1/8"	1/5	50	1517	\$ 6.56	1-1/2	2-1/4	3/4	3/8 X 3/8"	7-1/2	25
1542	\$ 1.56	1/4	5/8	9/32	10-32 X 1/8"	1/4	50	1521	\$ 8.32	1-9/16	2-1/2	13/16	3/8 X 3/8"	10-3/4	10
1543	\$ 1.60	5/16	5/8	11/32	10-32 X 1/8"	1/2	50	1522	\$ 8.52	1-5/8	2-1/2	13/16	3/8 X 3/8"	10	10
1500	\$ 1.68	3/8	3/4	3/8	1/4 X 3/16"	1/2	50	1518	\$ 8.72	1-11/16	2-1/2	13/16	3/8 X 3/8"	9-1/4	10
1501	\$ 1.76	7/16	7/8	7/16	1/4 X 1/4"	1	50	1523	\$11.12	1-3/4	2-3/4	7/8	1/2 X 1/2"	13-1/2	10
1502	\$ 1.84	1/2	1	7/16	1/4 X 1/4"	1-1/4	50	1524	\$11.32	1-13/16	2-3/4	7/8	1/2 X 1/2"	13	10
1503	\$ 2.20	9/16	1	7/16	1/4 X 1/4"	1-1/4	25	1525	\$11.52	1-7/8	2-3/4	7/8	1/2 X 1/2"	12-1/4	10
1504	\$ 2.32	5/8	1-1/8	1/2	5/16 X 1/4"	1-1/2	25	1519	\$11.80	1-15/16	3	7/8	1/2 X 1/2"	16-1/4	10
1505	\$ 2.52	11/16	1-1/4	9/16	5/16 X 1/4"	2	25	1526	\$12.00	2	3	7/8	1/2 X 1/2"	16	10
1506	\$ 2.52	3/4	1-1/4	9/16	5/16 X 1/4"	2	25	1530	\$13.08	2-1/8	3	7/8	1/2 X 1/2"	16	5
1507	\$ 2.88	13/16	1-5/16	9/16	5/16 X 1/4"	2	25	1531	\$13.28	2-3/16	3-1/4	15/16	1/2 X 1/2"	18-1/2	5
1508	\$ 3.00	7/8	1-1/2	9/16	5/16 X 5/16"	2-1/2	25	1532	\$13.48	2-1/4	3-1/4	15/16	1/2 X 1/2"	17-1/2	5
1509	\$ 3.32	15/16	1-5/8	9/16	5/16 X 5/16"	3-1/4	25	1533	\$13.68	2-5/16	3-1/4	15/16	1/2 X 1/2"	17-1/4	5
1510	\$ 3.44	1	1-5/8	5/8	5/16 X 5/16"	4	25	1534	\$13.92	2-3/8	3-1/4	15/16	1/2 X 1/2"	22	5
1511	\$ 4.60	1-1/16	1-3/4	5/8	5/16 X 5/16"	4-1/4	25	1535	\$16.40	2-7/16	3-1/2	1	1/2 X 1/2"	21-3/4	5
1512	\$ 4.80	1-1/8	1-3/4	5/8	5/16 X 5/16"	3-3/4	25	1536	\$16.60	2-1/2	3-1/2	1	1/2 X 1/2"	20-3/4	5
1513	\$ 5.28	1-3/16	2	11/16	3/8 X 3/8"	6	25	1537	\$20.00	2-9/16	3-3/4	1-1/8	1/2 X 5/8"	30	5
1514	\$ 5.52	1-1/4	2	11/16	3/8 X 3/8"	6	25	1538	\$22.00	2-11/16	4	1-1/8	1/2 X 5/8"	35	5
1520	\$ 5.76	1-5/16	2-1/8	11/16	3/8 X 3/8"	6-1/2	25	1539	\$24.20	2-3/4	4	1-1/8	1/2 X 5/8"	34	5
1515	\$ 6.00	1-3/8	2-1/8	3/4	3/8 X 3/8"	6-1/2	25	1540	\$26.40	2-15/16	4-1/4	1-1/8	1/2 X 5/8"	38	5
1516	\$ 6.28	1-7/16	2-1/4	3/4	3/8 X 3/8"	7-3/4	25	1541	\$26.80	3	4-1/4	1-1/8	1/2 X 5/8"	36	5

* Maurey Steel Shaft Collars Only Sold in Multiples of Standard Package Quantities (No Broken Lots)



Single Groove Sheave



Double Groove Sheave

INSTALLATION AND REMOVAL OF HQ BUSHINGS

INSTALLATION:

1. Make sure the bore of the sheave and the tapered cone surface of the bushing are free of all foreign substances such as paint, dirt, lubricants, etc. Do not use lubricants on installation.
2. Assemble as illustrated, by inserting two cap screws through clearance holes in bushing. Cap Screws are to be loosely inserted in sheave so that bushing easily slides on to shaft.
3. Place keystone in keyseat between shaft and bore of bushing.
4. Tighten screws progressively. (See tightening instructions.)

TIGHTENING INSTRUCTIONS:

When mounting HQ Bushings which are slotted all the way through to maintain even torque (Ful-Grip Design), tightening forces on the screws are multiplied many times by the wedging action of the tapered surface. If extreme screw tightening forces are applied in mounting the HQ Bushing, bursting pressure will be created in the hub of the mounted sheave which may cause it to crack, and void the warranty.

CAUTION: Do not use lubricants on screw threads or tapered surfaces
Refer to the recommended torque ratings.
Tighten bushing screws evenly and progressively

REMOVAL INSTRUCTIONS:

1. Loosen and remove cap screws.
2. Insert cap screws in threaded holes of bushing.
3. Tighten evenly until sheave is loose on shaft.

WRENCH TORQUE VALUE FOR TIGHTENING HQ FUL-GRIP BUSHING

Bushing	Wrench Torque In Pounds	Wrench Length In Inches	Wrench Pull In Pounds
HQ	90	4	22
HQ	90	10	9